

L.E.D. is the New Standard in Lighting. Lumens³ is the New Standard in L.E.D.

PARKING LOT ENHANCED SECURITY CUSTOM SENSOR (S.A.L.T.)™ LIGHTING & SENSING CONFIGURATION.

FINALLY, A SINGLE LED LIGHTING & SENSING SYSTEM NOW EXISTS TO COMPREHENSIVELY ACCOMMODATE ALL YOUR PARKING LOT & ENHANCED SECURITY REQUIREMENTS WITH A VARIETY OF SENSORS & REPORTING SYSTEM TECHNOLOGIES BEYOND JUST CAMERAS.

EXCLUSIVE PATENTED ALL-IN-ONE CUSTOM-ENGINEERED SENSOR INTERFACE ALLOWS YOU TO ADD ANY SENSOR YOU MIGHT NEED FOR YOUR MONITORING OPERATIONS. NOW YOU CAN MEASURE, CONTROL, ANALYZE, STORE DATA, & MONITOR EVERYTHING FOR DIFFERENT APPLICATIONS WITH ONE SYSTEM.

LIGHTING CONFIGURATIONS*:

- *CONFIGURABLE HIGH-LUMEN ILLUMINATION;
- *HIGH-LUMEN-AREA ILLUMINATION w/SECURITY FEATURES;
- *HIGH-LUMEN PARKING LOT ILLUMINATION & CAMERAS w/MOTION TRACKING & w/SECURITY FEATURES;

AVAILABLE SENSORS*:

- *Built-in Security System Cameras; Microphones;
- *Perimeter Security Sensors; Ground Sensors; Motion Sensors; Laser Sensors;
- *Speaker Intercom Systems;
- *Custom Text Modulation Messaging that Report Sensor Findings or to Manage Personnel.
- *Special Sensors Beyond Motion Sensors Allow Tracking of Movement with Light Panel Rotation & Follow of Motion and Camera Follow of Motion Capabilities;
- *Color Change Sensors that provide alerts to Personnel for Custom Programmed Situations or Emergencies that need to be remedied;
- *Optional Drone Communication Sensor Interfaces; Drone Recharging Platforms;
- *Other Sensors as might be needed and as they become available.



L.E.D. is the New Standard in Lighting. Lumens³ is the New Standard in L.E.D.

FINALLY, YOU CAN NOW CONTROL THE FOLLOWING EQUIPMENT & SYSTEMS WITH ONE LIGHTING, SENSING & CONTROL SYSTEM THAT HAS THE FOLLOWING CAPABILITIES:

- *Proprietary logic allows you to set and use any array of engineered sensors and trigger levels for turning external devices on and off, to control external devices, and for reporting and data logging purposes.

- *Reporting, data storage, & control functions to automatically provide alerts to:

- *FIRST RESPONDERS.

- *HANDHELD DEVICES, SMARTPHONES, COMPUTERS.

Functions to automatically control & manually operate and interface with emergency communications equipment, such as:

- *WIFI Communications built into Lighting & Sensing Systems;

- *Satellite Communications Systems;

- *Wired Local Communication Systems.

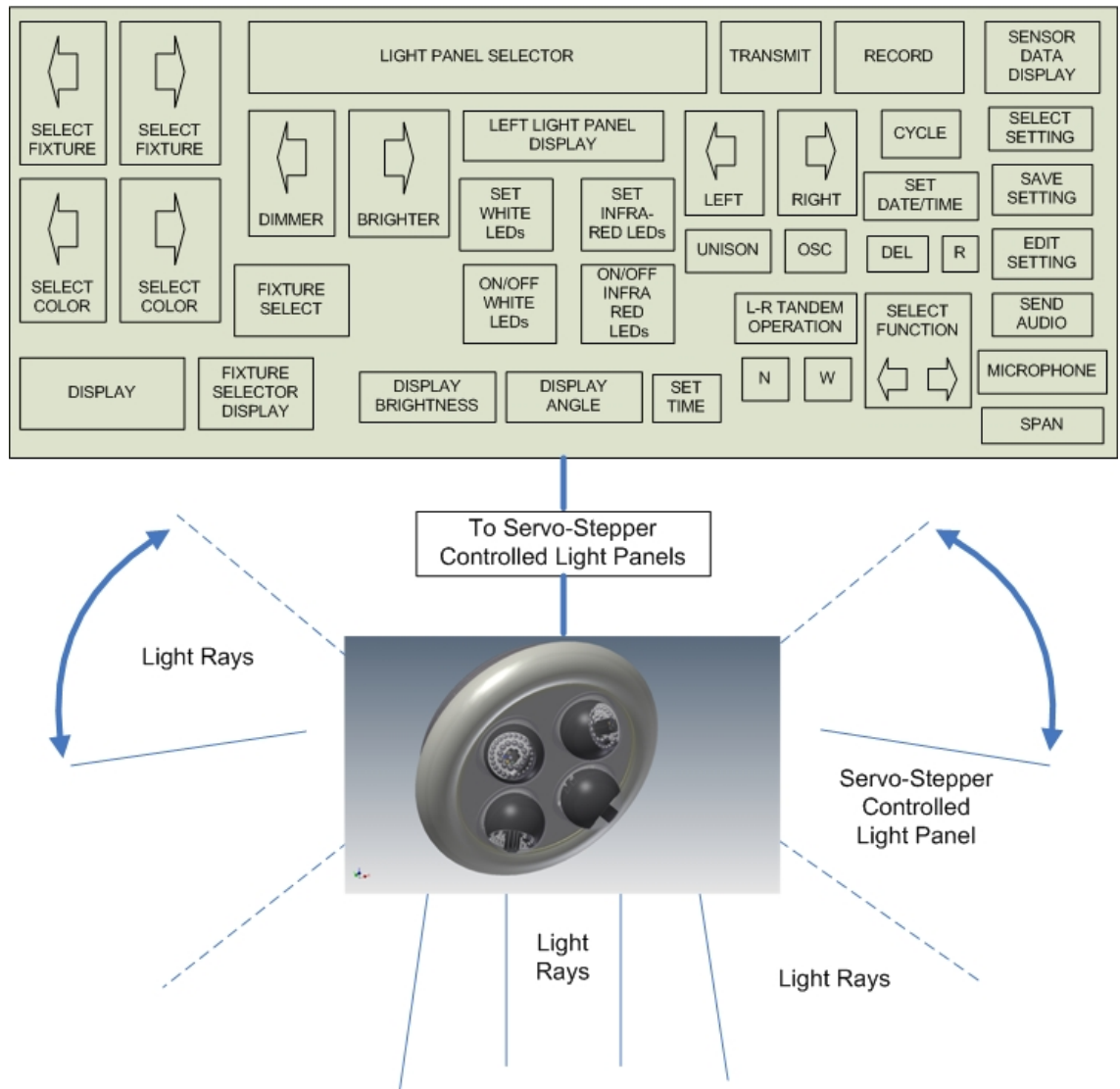
- *All Uriel sensing devices are wirelessly connected via a mesh network to smart mobile devices that empowers those devices with smart logic that can detect and report problems remotely. The system allows to configure set points that automatically send alerts for critical events.

Uriel Lighting & Sensing Systems are totally wireless systems that deliver complete wireless control of attached sensors and respective conditions, with user inputted sensor thresholds that if exceeded, alert or take action as required.



Exclusive Patented Lumens³ LED Control Systems:

SYSTEM CONTROL PANEL WITH MULTI-LIGHT PANEL ROTATABLE LIGHT FIXTURE*



For more information on any of
our products or services please
visit us on the Web at:
www.lumenscubed.com

*The Control Panel is designed specifically for your configured application and your specific light unit, which may have a different number of light panels. Specifications and features may vary from the description above. The features shown in the controller above are only a sample of over 122 available features. The Control Panels are designed to work with your specific version of Uriel Corporation's S.A.L.T.TM LED Lighting Systems.



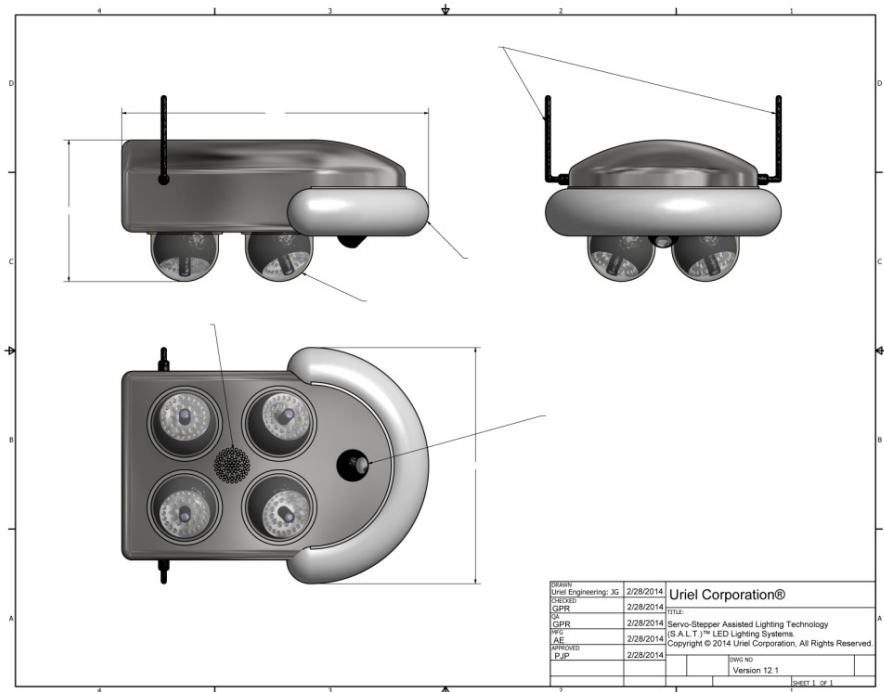
Other Exclusive Lumens³ Features:

Lighting Systems Technology with WIFI.



- Lighting-WIFI, Data, Communications Capability.
- Lumens³ is the efficient, cost effective option to deliver WIFI throughout your operations.

Various Configurations of Rotatable LED Light Panels are available Per Unit. (*Actual Enclosures / Lens Filters may have a different appearance.)



For more information on any of
our products or services please
visit us on the Web at:
www.lumenscubed.com

PATENTED EXCLUSIVE (S.A.L.T.)™ LED SYSTEMS further include:

FURTHER EXCLUSIVE SYSTEMS:

VEHICULAR MULTI-SERVO /
STEPPER ASSISTED LIGHTING
TECHNOLOGY (S.A.L.T.)™ LED
SYSTEMS

INDOOR MULTI-SERVO /
STEPPER ASSISTED LIGHTING
TECHNOLOGY (S.A.L.T.)™ LED
SYSTEMS

SPECIAL PURPOSE MULTI-
SERVO / STEPPER ASSISTED
LIGHTING TECHNOLOGY
(S.A.L.T.)™ LED SYSTEMS
EXCLUSIVE LIGHTING,
SENSING, & MONITORING.

Lumens[®] is a wholly owned Lighting
and Sensing Marketing & Sales
Subsidiary of Uriel Corporation.

- Rotation of Panels:
Multiple rotational modes.
- Intensity:
Multiple lumen ranges available;
Manual & Automatic brightness control also maintains system brightness at LED End of Life Cycle.
- Sensors:
Multiple alert sensors; Manual and automatic operational control capability.
- Communication:
Audio, Video, & Data Bidirectional Communication;
Password-enabled Communication.
- Next Generation LED Light Source Technology:
Energy saving; Long Life LED time rated up to 130,000+ hours or ~30 years+;
Reduced maintenance; Multiple power source capability;
Programmable & manual operation.
- Auto-Switching Solar Powered/Battery Backup Option --- AC to DC Power Supply.
Solar Powered Option (with battery energy storage); AC Charging on cloudy days.
- Thermal Shock Avoidance Technology™:
Exclusive Patented Heating/Cooling Cycling Technology To Extend Operating Life
- Options:
Automatic & manual rotation modes; cameras; microphones; speakers; displays;
sensor trigger array interface(s).



Uriel Corporation®

L.E.D. is the New Standard in Lighting. Lumens³ is the New Standard in L.E.D.

SERVO / STEPPER ASSISTED LIGHTING TECHNOLOGY
(S.A.L.T.)TM PRODUCT FAMILIES:*



*Also available with Black Powder Coating.



Uriel Corporation®

About Uriel Corporation.



Uriel Corporation was established as a R&D Engineering Think Tank in 1984. Uriel Corporation's PATENTED, EXCLUSIVE MULTI-SERVO / STEPPER ASSISTED LIGHTING TECHNOLOGY (S.A.L.T.)™ LED SYSTEMS, THREAT MONITORING™ and SENSOR MONITORING™, and AREA SURVEILLANCE REPORTING™ Sensor Technology Options are the result of many years of Research and Development and Engineering undertaken by Uriel Corporation focusing on providing the world's new standard in lighting.

The Uriel Corporation LUMENS³ (LUMENS CUBED) marketing division is a marketing extension of Uriel Corporation that markets and sells Uriel Corporation's PATENTED, EXCLUSIVE LED Multi-Servo/Stepper Assisted Lighting Technology (S.A.L.T.)™ LED Systems.

Patents are Issued and Pending.

SERVICES AVAILABLE:

Technical Support
Installation and Setup
Maintenance
Hardware Support
Warranty

- Contact a Uriel Corporation Quotation Engineer today to assist you in developing your custom build-to-order LED Lighting System.

- For more information on any of our products or services please visit us on the Web at: www.lumenscubed.com

For fastest service please email all inquiries and purchase orders to: sales@urielcorporation.com.

Uriel Corporation Headquarters
One Westbrook Corporate Center, Suite 300
Westchester, IL 60154-5709
1 (708) 598-7314, sales@urielcorporation.com

Parent Company: www.urielcorporation.com
Lighting Systems Sales & Marketing Domains:
www.lumenscubed.com, www.lumens3.com

Uriel Corporation and Lumens³ are
Registered Trademarks of Uriel Corporation
Copyright © 2015, All Rights Reserved.
Template/Product Configuration Version 12.1



Uriel Corporation®